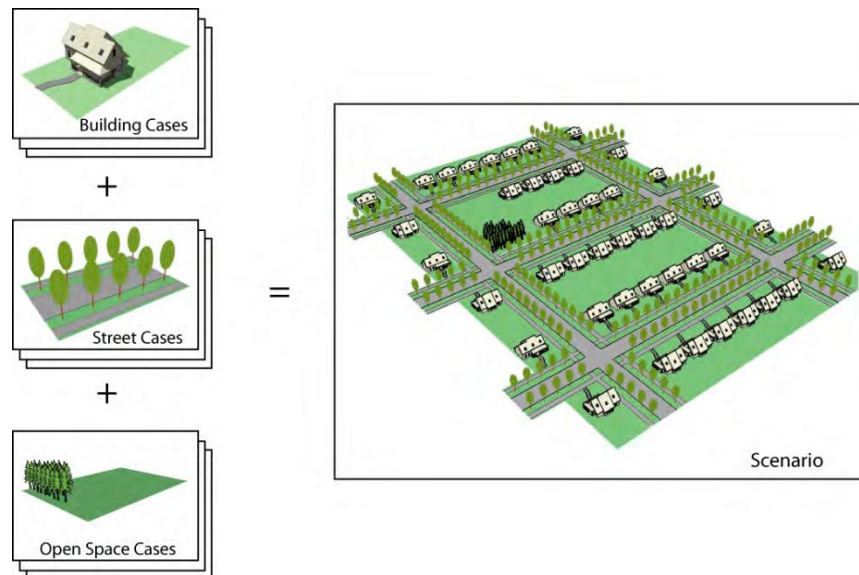


Creation and Comparison of Sustainable Neighbourhood Patterns

CPSC 533C
Jen Fernquist

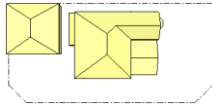
The Problem – Overview

- ▶ Landscape Architecture group aims to create sustainable neighbourhoods
- ▶ Collaboration with city planners
- ▶ Each have their goals, try to meet in the middle
- ▶ End result: a “pattern”

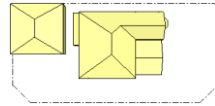


The Problem – The Goal

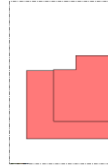
Inputs:



$3p, 0j$



$3p, 0j$



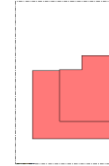
$0p, 10j$



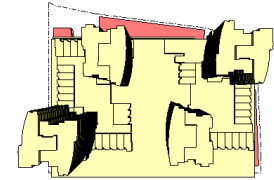
$0p, 10j$



$0p, 10j$



$0p, 10j$

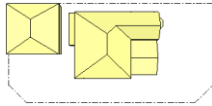


$919p, 32j$

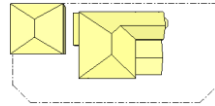


The Problem – The Goal

Inputs:



$3p, 0j$



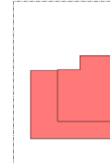
$3p, 0j$



$0p, 10j$



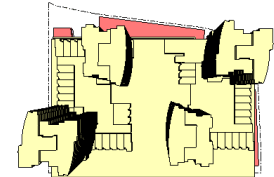
$0p, 10j$



$0p, 10j$



$0p, 10j$

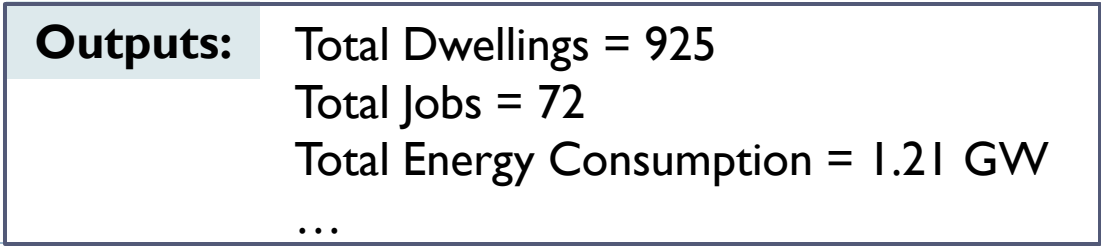
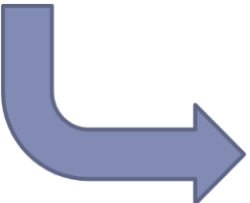
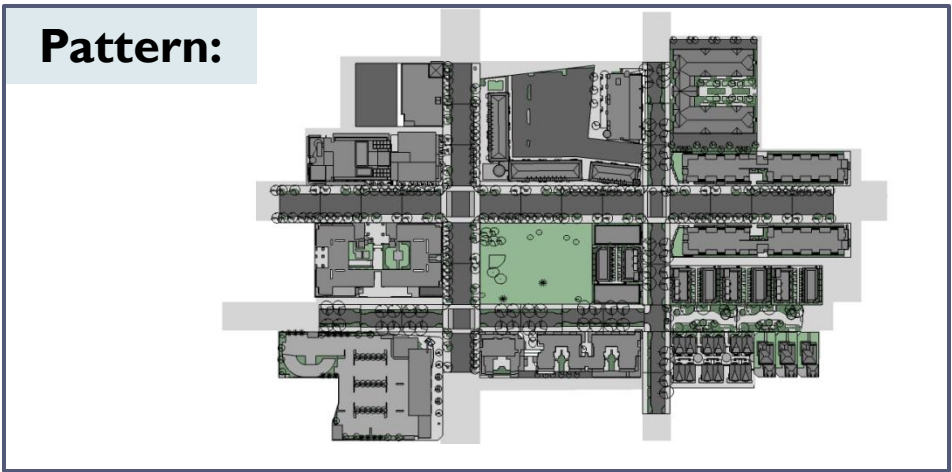
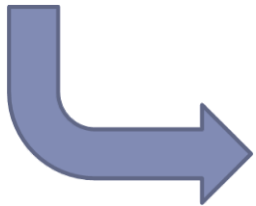
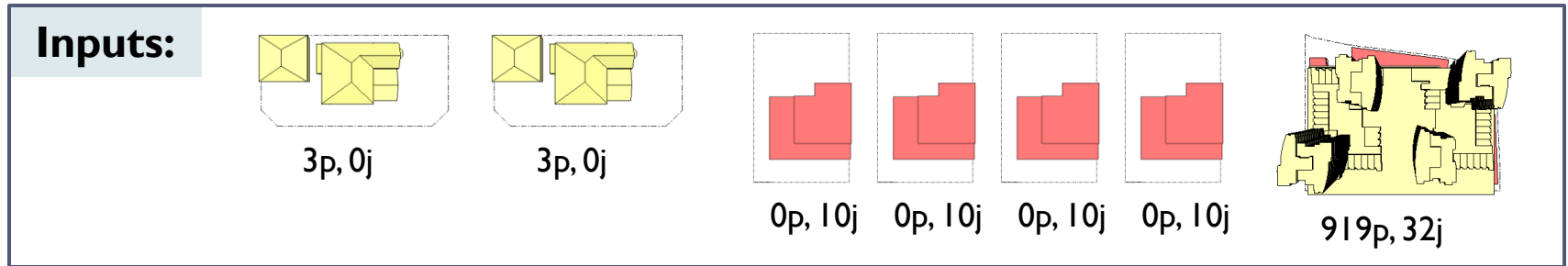


$919p, 32j$

Pattern:



The Problem – The Goal



The Problem – Current Method

- ▶ **Collaboration around table:**
 - ▶ Paper maps
 - ▶ Paper cutouts of elements
 - ▶ Masking tape to place elements in map
 - ▶ Manually compute outputs in spreadsheet



The Problem – Current Method

- ▶ **Collaboration around table:**
 - ▶ Paper maps
 - ▶ Paper cutouts of elements
 - ▶ Masking tape to place elements in map
 - ▶ Manually compute outputs in spreadsheet

- ▶ **Issues:**
 - ▶ No way to “save” at any point
 - ▶ Hard to compare different solutions
 - ▶ Labour intensive calculation; prone to user error



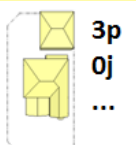
The Dataset

- ▶ Pictures of elements
- ▶ Numerical input data
- ▶ Map of desired area

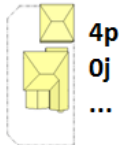


My Solution – Multi-touch Table!

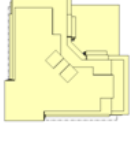
Residential



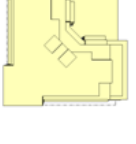
3p
0j
...



4p
0j
...



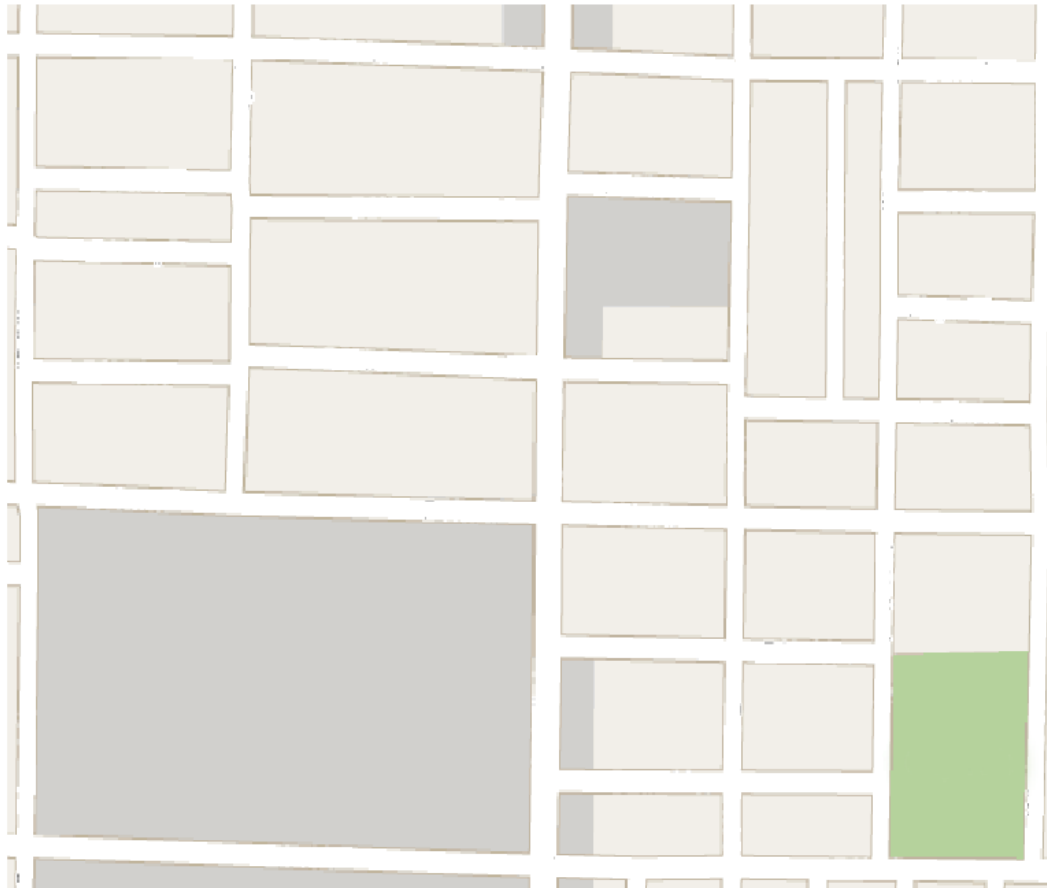
150p
0j
...



175p
0j
...

Commercial

Mixed Use



0	0	0	0	
Energy Consumption	Population	Jobs	Pedestrian Connectivity	Land Use



My Solution

Residential

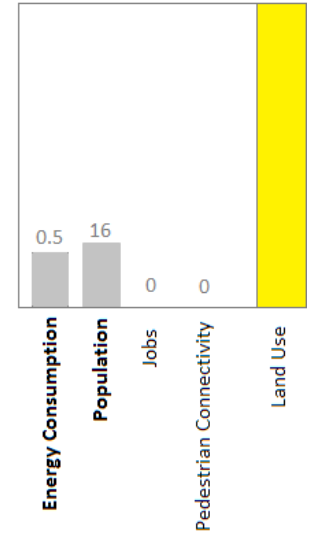
- 3p
0j
...
- 4p
0j
...
- 150p
0j
...
- 175p
0j
...

Commercial

Mixed Use



Save



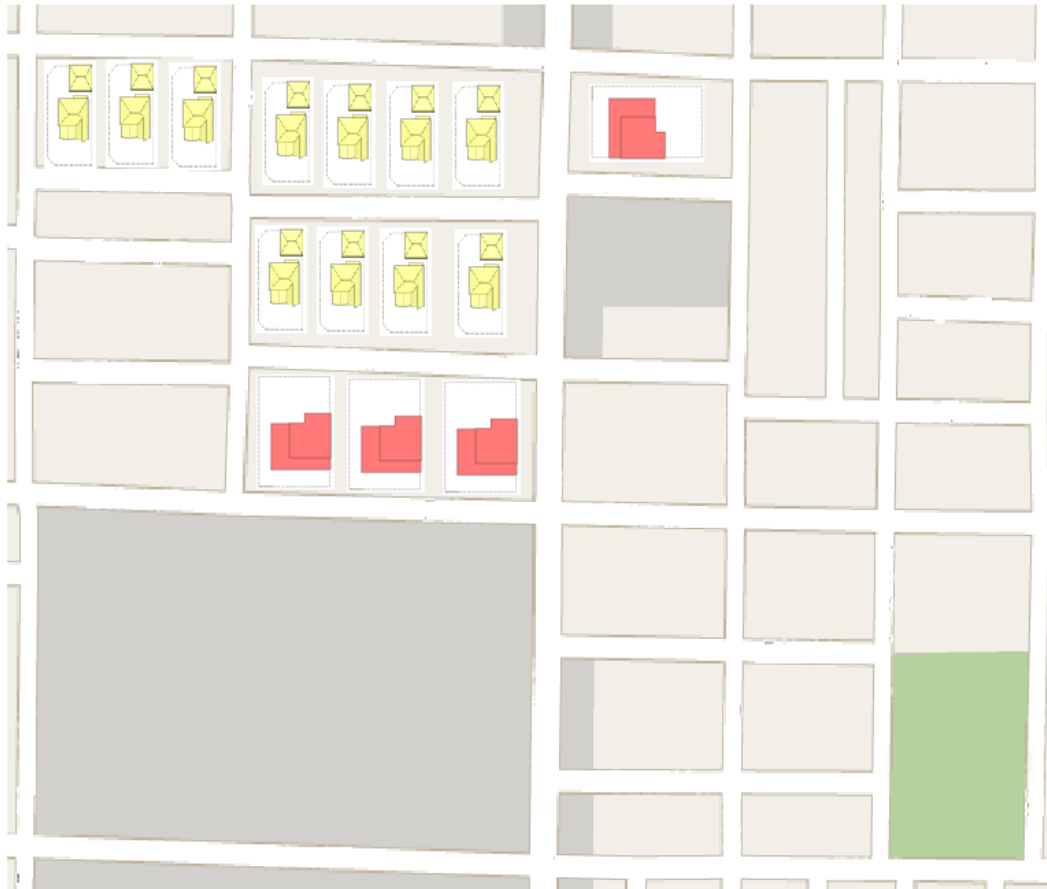
My Solution

Residential

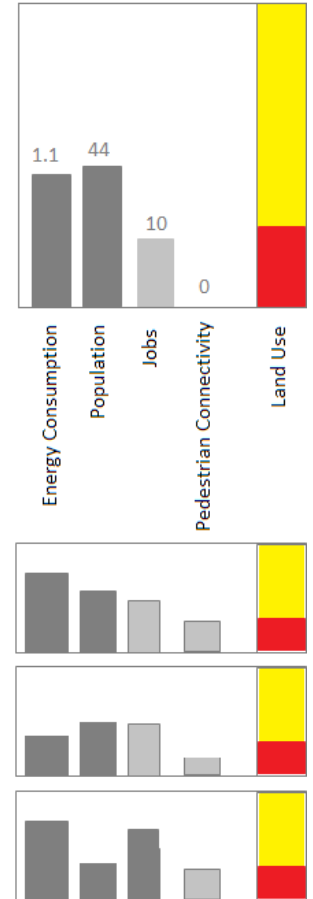
- 3p
0j
...
- 4p
0j
...
- 150p
0j
...
- 175p
0j
...

Commercial

Mixed Use



Save



Progress Thus Far

▶ Done:

- ▶ Carry out user observation ✓
- ▶ Get OK on mock-up ✓
- ▶ Become familiar with SMART Table SDK ✓



Progress Thus Far

▶ Done:

- ▶ Carry out user observation ✓
- ▶ Get OK on mock-up ✓
- ▶ Become familiar with SMART Table SDK ✓

▶ ToDo:

- ▶ Integrate C# libraries for menus, charts
- ▶ Implement everything!



Questions?

