

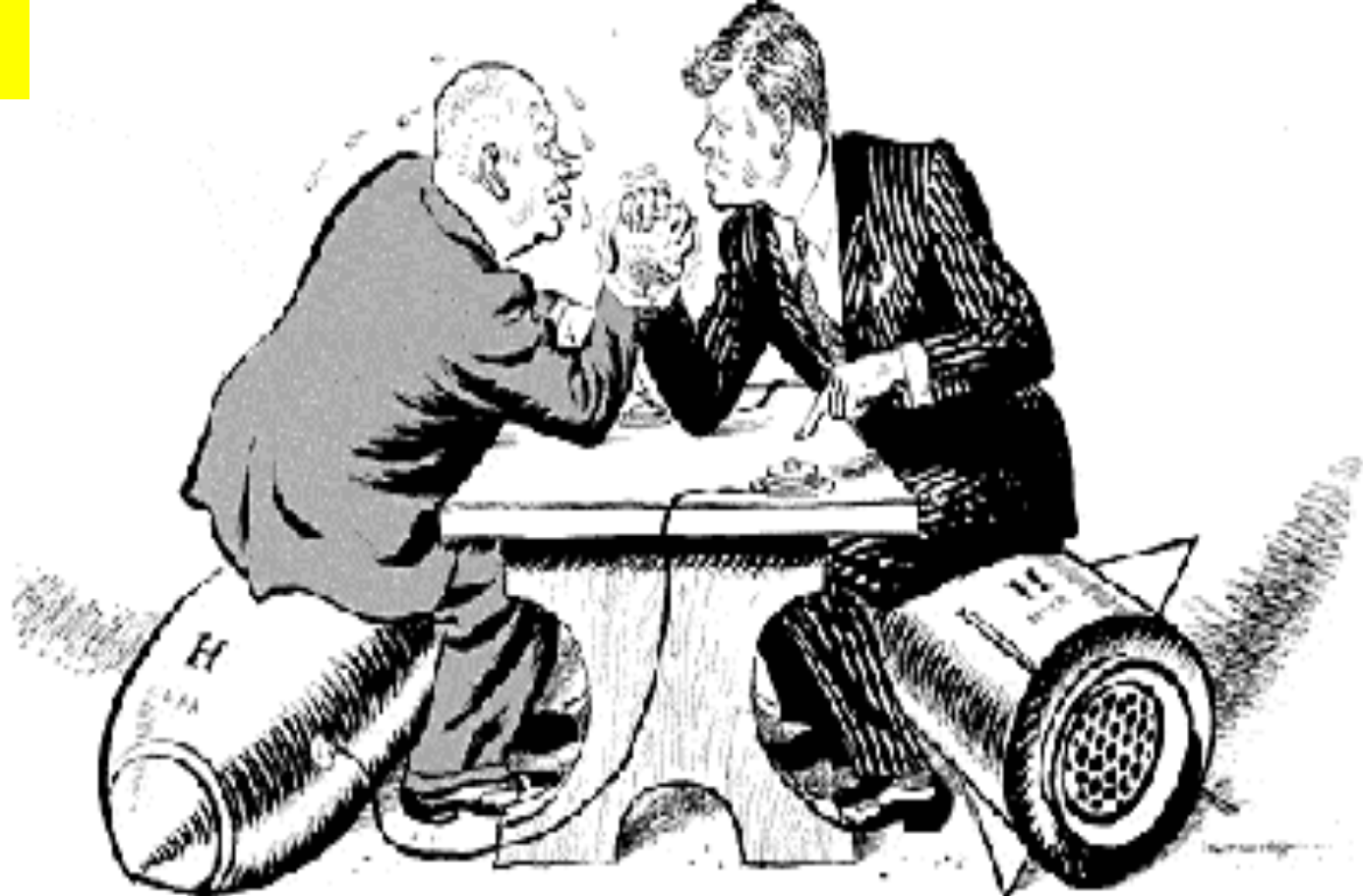
Title: Cuban Missile Crisis

Keywords:

- Batista
- Fidel Castro
- Bay of Pigs
- Sugar
- U2 Spy plane
- Khrushchev



Starter:



1. What is happening in this cartoon?
2. What do you think the term 'cold war' means and how was it different to the two world wars?
3. What can we infer (understand) about the cold war from this cartoon?
4. Who are the two people in the cartoon?

**Nikita
Khrushchev**





Expansion of Communism.



1920s and 1930s

1940s and 1950s

1960s and 1970s

<https://www.youtube.com/watch?v=oWALXrWeDQA>

COLD WAR

- EASTERN BLOC
- WESTERN BLOC
- IRON CURTAIN



Where is Cuba?

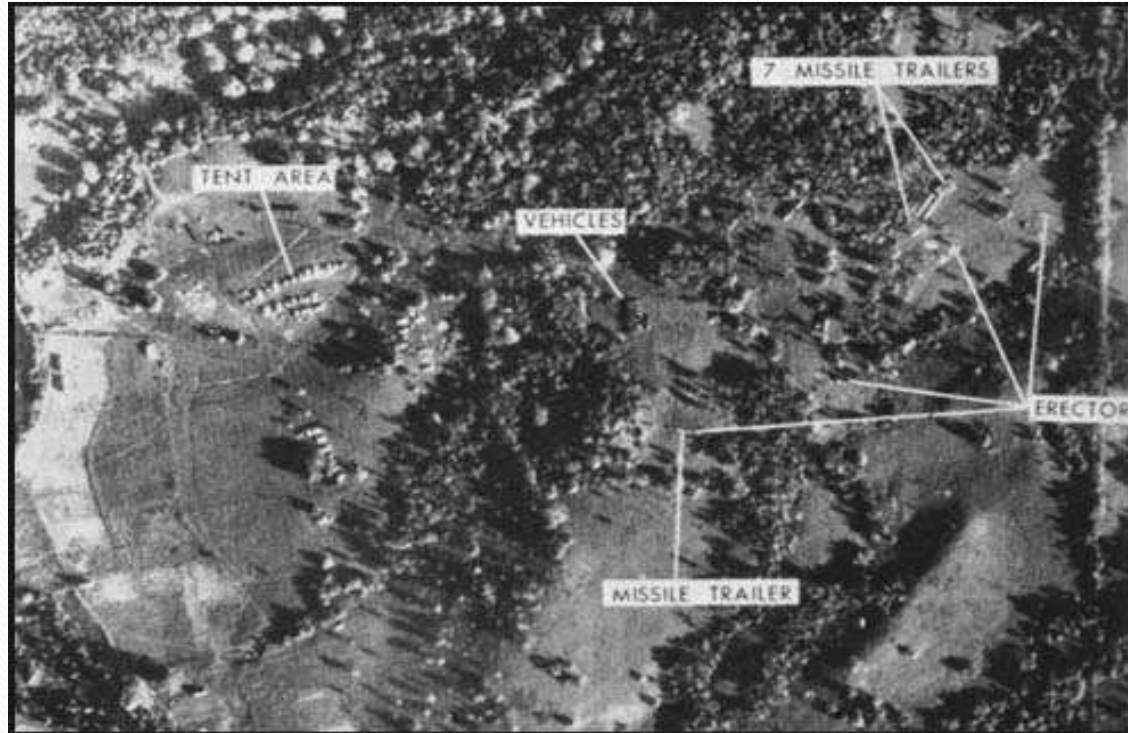


Pictionary ...

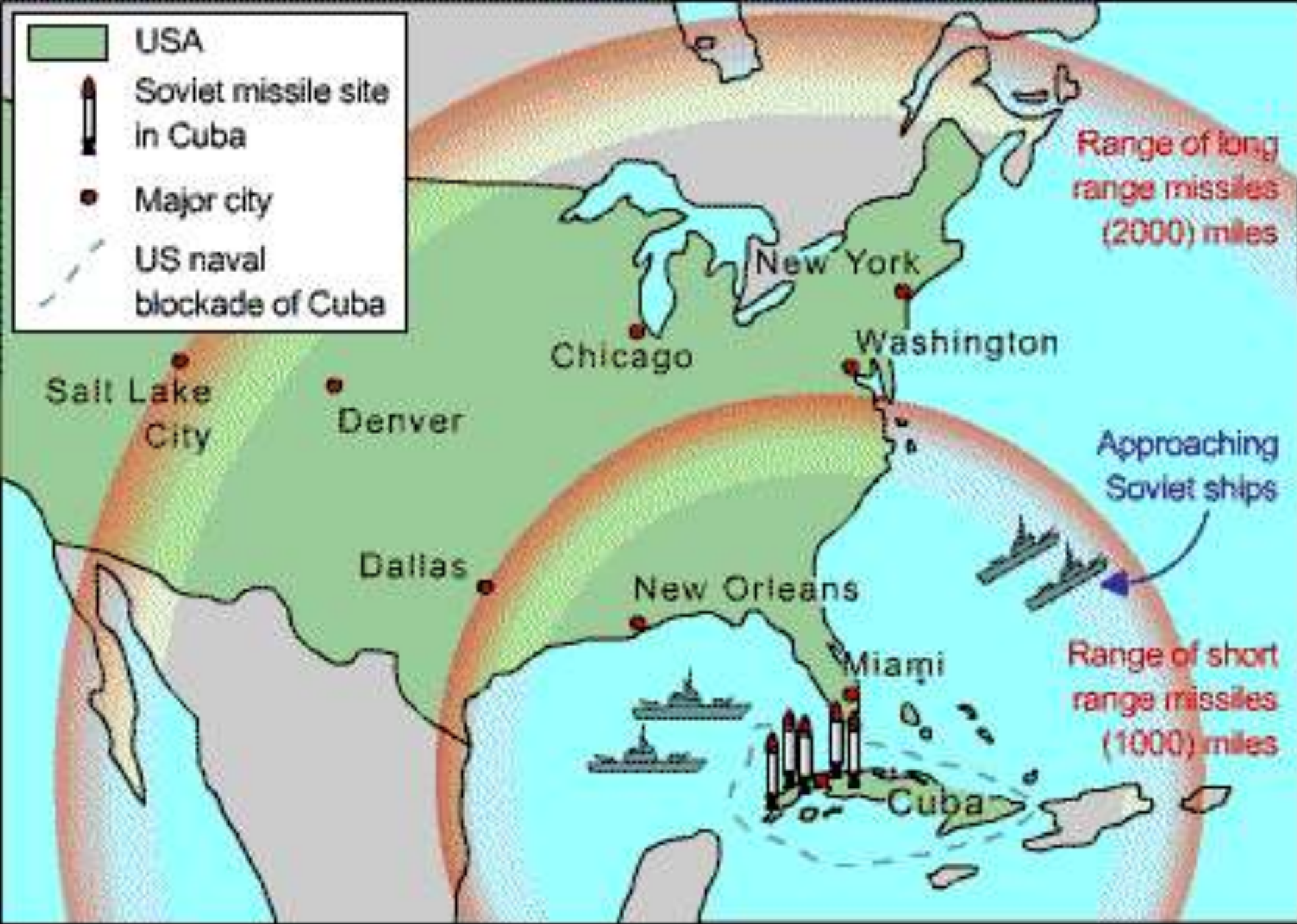


U2 Spy plane

- The US heard rumours that the Russians were placing missiles in Cuba. So Kennedy sent **U2 spy planes** to investigate. They took photos which proved that the rumours were true.



- USA
- Soviet missile site in Cuba
- Major city
- US naval blockade of Cuba



Under pressure, what would you do if you were John F. Kennedy?



U.S. BLOCKADES CUBA, TELLS RUSS 'LAY OFF'

1. What does blockade mean?
2. Who is the man in the picture?
3. Did the USA make the right choice?

Will Sink Ships That Won't Halt

WASHINGTON (AP)—The United States is ready to sink enemy submarines that stop to load in Cuba which threaten to stop the U.S. from carrying out its mission, a defense spokesman said last night.

The United States is ready to sink enemy submarines that stop to load in Cuba which threaten to stop the U.S. from carrying out its mission, a defense spokesman said last night.

The United States is ready to sink enemy submarines that stop to load in Cuba which threaten to stop the U.S. from carrying out its mission, a defense spokesman said last night.

The United States is ready to sink enemy submarines that stop to load in Cuba which threaten to stop the U.S. from carrying out its mission, a defense spokesman said last night.

President's Cuba Stand Far-Reaching

By MICHAEL, PHOENIX
Special Foreign Editor

WASHINGTON—President Kennedy's speech on Cuba is without doubt the most serious and far-reaching American foreign policy announcement since President Truman announced to the world that the U.S. would not tolerate a Soviet base in Cuba.

The President's speech is far-reaching in its scope and in its implications. It is a declaration of war on the Soviet Union.

The President's speech is far-reaching in its scope and in its implications. It is a declaration of war on the Soviet Union.

The President's speech is far-reaching in its scope and in its implications. It is a declaration of war on the Soviet Union.

The President's speech is far-reaching in its scope and in its implications. It is a declaration of war on the Soviet Union.

The President's speech is far-reaching in its scope and in its implications. It is a declaration of war on the Soviet Union.

Southeast Gears To War Pace

MIAMI, Fla. (UPI)—Military leaders in the Southeast are gearing to warlike activity last night as ships, planes, submarines and troops were ordered to back up the U.S. blockade of Cuba.

Even before President Kennedy announced the blockade, the Southeast was in a state of readiness.

The Southeast is in a state of readiness. The Southeast is in a state of readiness.

The Southeast is in a state of readiness. The Southeast is in a state of readiness.



PRESIDENTIAL CLOSURE—President Kennedy announced that the U.S. would blockade Cuba to prevent the Soviet Union from sending more weapons to the island.

President Acts Island's A-Missile Build-Up Cited

WASHINGTON (AP)—President Kennedy ordered a U.S. "quarantine" blockade of Cuba last night, saying the Soviet Union was sending "offensive" missiles to the island.

The President's action is a direct response to the discovery of Soviet missiles in Cuba. It is a direct response to the discovery of Soviet missiles in Cuba.

The President's action is a direct response to the discovery of Soviet missiles in Cuba. It is a direct response to the discovery of Soviet missiles in Cuba.

The President's action is a direct response to the discovery of Soviet missiles in Cuba. It is a direct response to the discovery of Soviet missiles in Cuba.

The President's action is a direct response to the discovery of Soviet missiles in Cuba. It is a direct response to the discovery of Soviet missiles in Cuba.

Cuban Missile Crisis, 1962



THE LAWTON CONSTITUTION

RUSSIA SAYS BLOCKADE 'STEP TO NUCLEAR WAR'

Russia Near
Shutdown; Ships
Toward Cuba

OAS Backs Up Soviet Servicemen
Plans To Curb Discharges Halted,
Cuba Buildup All Leaves Canceled





THE END.