

# A geo-temporal analysis and visualization of migrant boats

Anika Mahmud  
University of British Columbia  
CPSC-533

# Task

1. Characterize the choice of landing sites and their evolution over the three years.
2. Characterize the geographical patterns of interdiction over the three years.
3. What is the successful landing rate over the time period?

# Data Set

<CoastGuardRecord>  
<EncounterCoords>  
**-80.33100097073213,25.10742916222947**</EncounterCoords>  
<RecordType>**Interdiction**</RecordType>  
<Passengers>**23**</Passengers>  
<USCG\_Vessel>**Ironwood**</USCG\_Vessel>  
<EncounterDate>**2005-04-24**</EncounterDate>  
<RecordNotes />  
<NumDeaths>**0**</NumDeaths>  
<LaunchCoords>  
**-80.23429525620114,24.08680387475695**</LaunchCoords>  
<VesselType>**Rustic**</VesselType>

# Tools

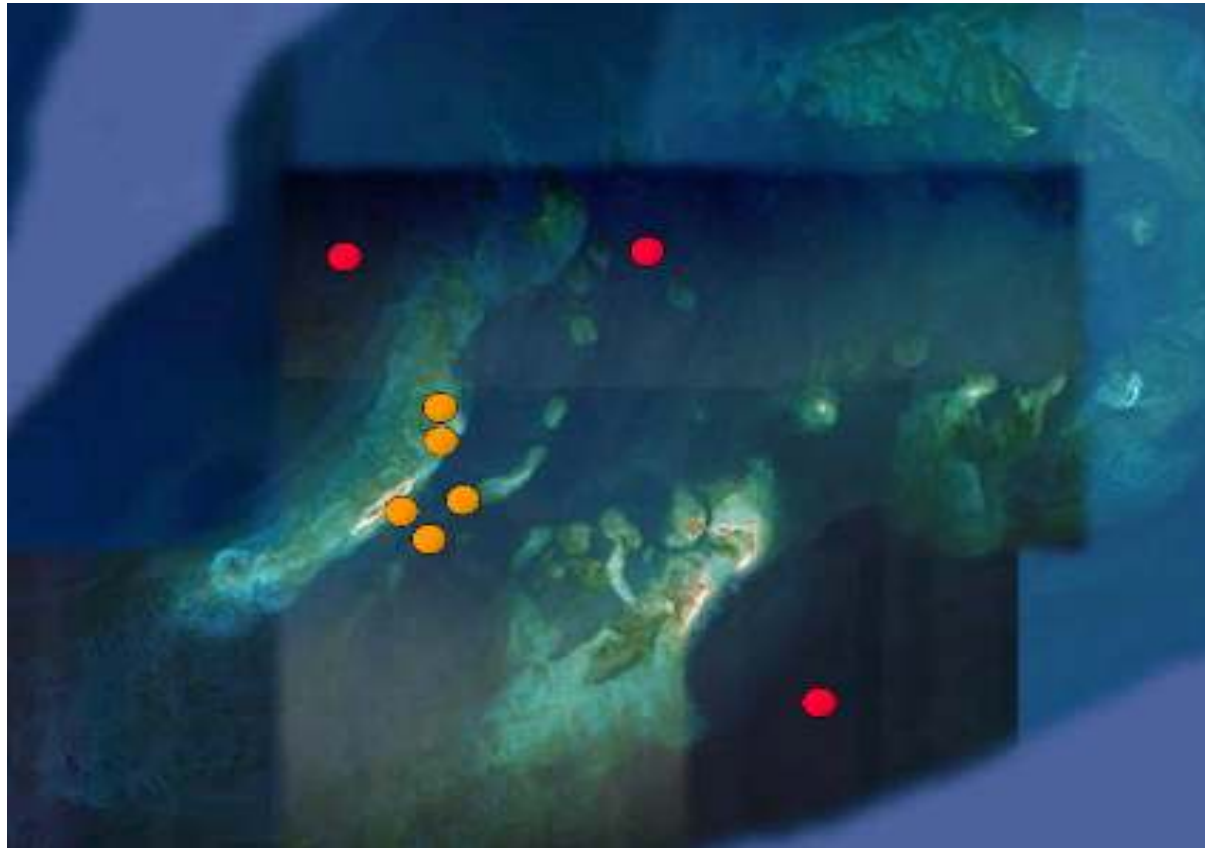
- Google earth
- Google charts
- Google earth api
- Google chart api
- Ark2Earth

# Design Issue

- Occlusion or Pattern?

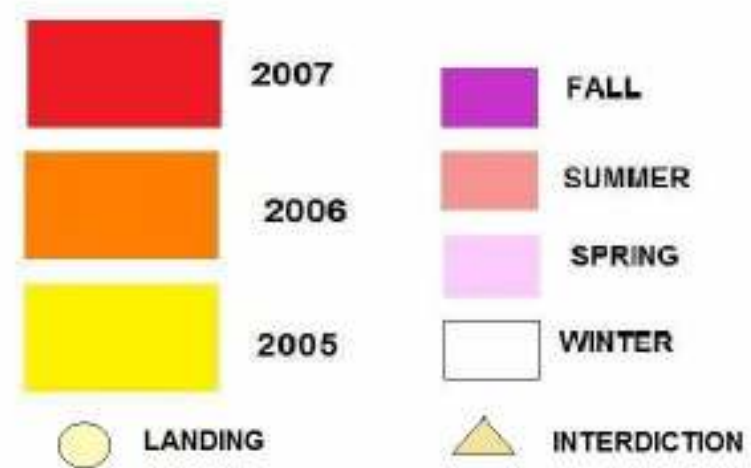


# Migrant Boats: Atypical pattern



# Design/Coding

- Small multiples for comparison
- Different hue
- Gradual progression
- Tested by colorbrewer



# Landing Pattern:

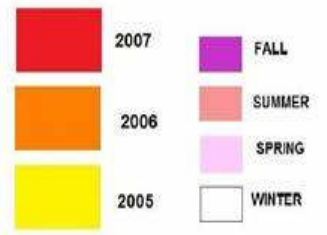
- Yearly
- Seasonal landing
- Yearly seasonal landing
- Successful Landing Sites
- Tentative yearly landing



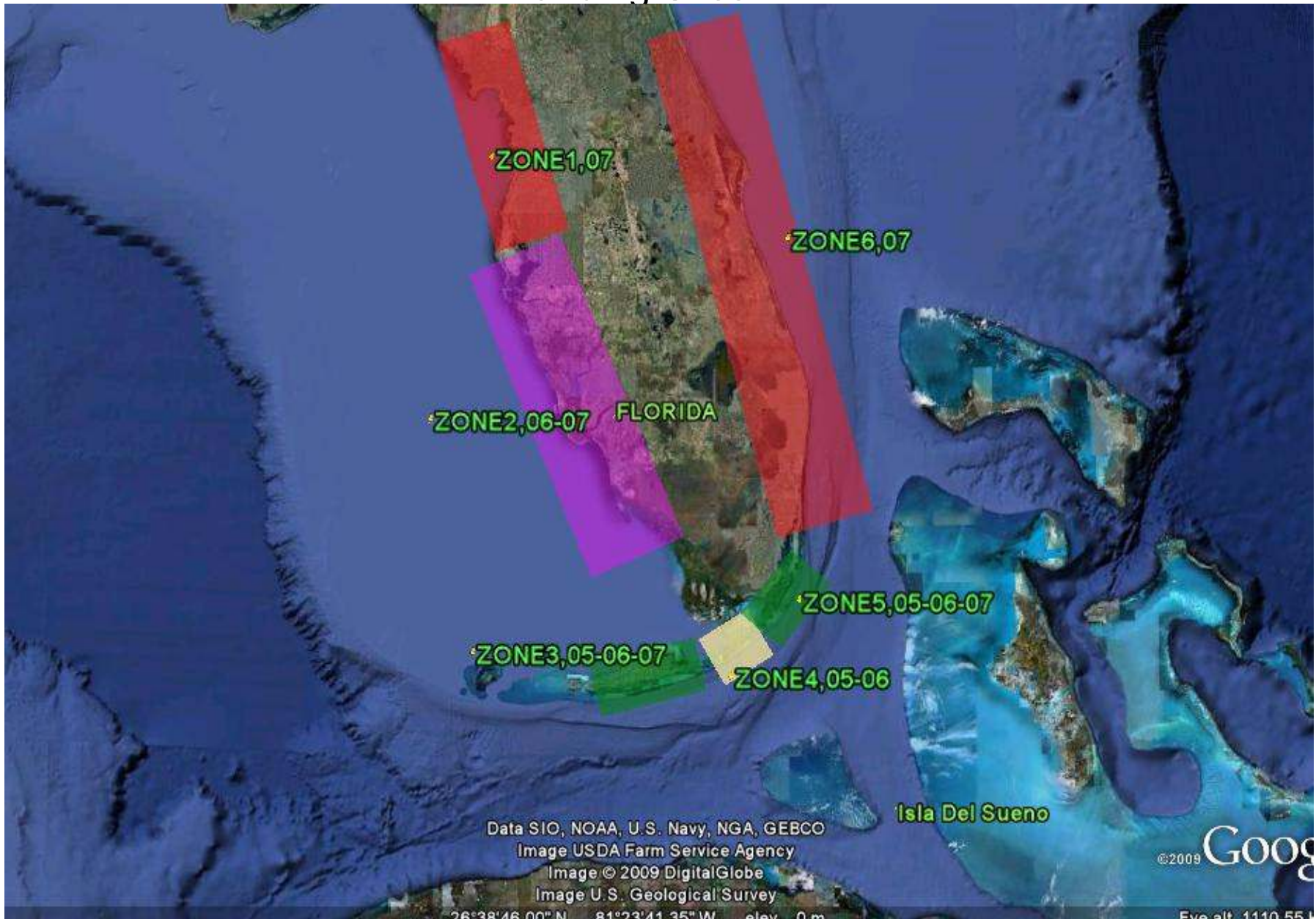


YEARLY LANDING ▾

Go



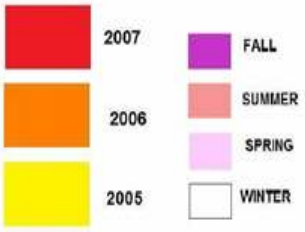
# Landing Sites





YEARLY SEASONAL LANDING ▾

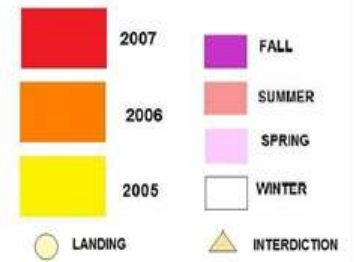
Go





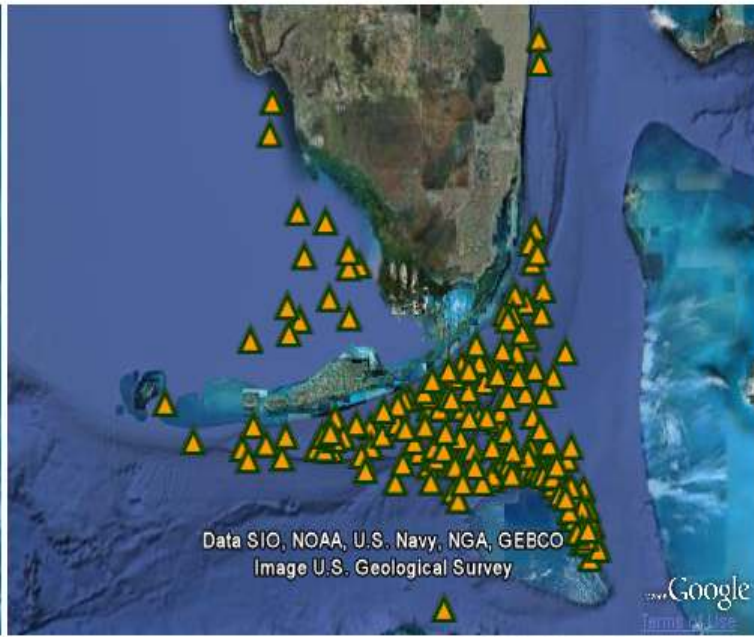
SEASONAL LANDING

Go



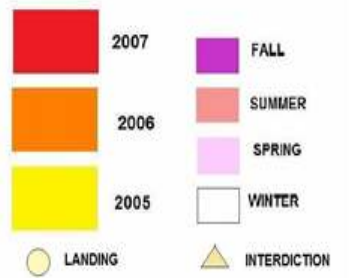
# Interdiction Pattern

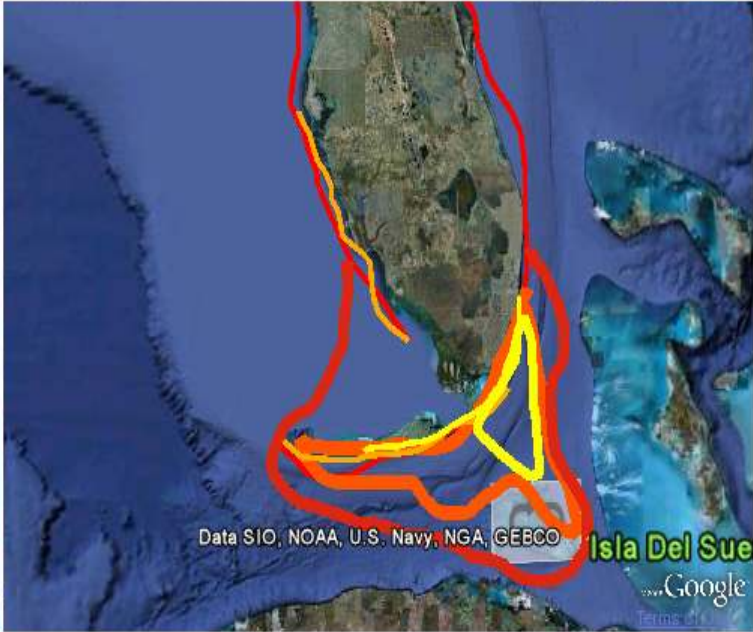
- Who is influencing whom and how?
  - interdiction changing pattern of migration?
  - migrants following any patterns?
  - Coast guards changed their pattern?



YEARLY INTERDICTION

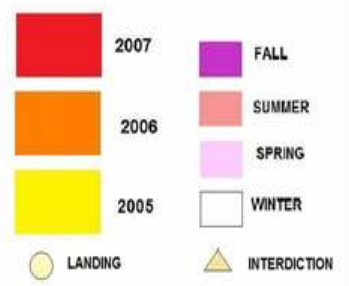
Go





YEARLY INTERDICTION/LANDING ▾

Go



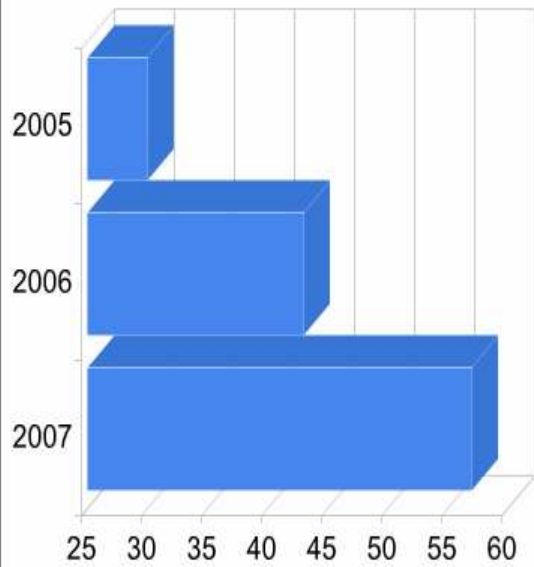
# Cat and Mouse Game?



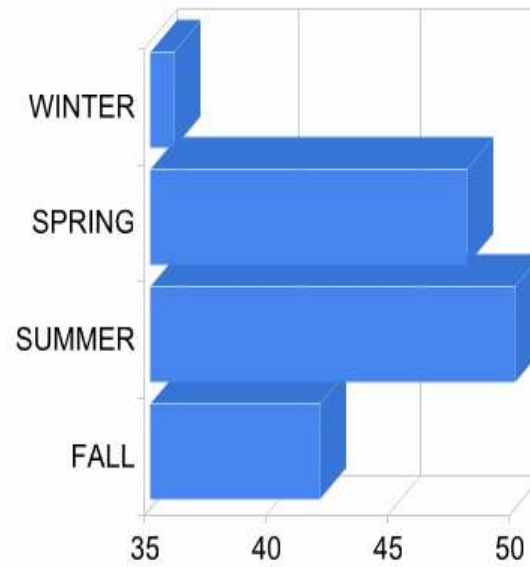
# Success Rate

- Yearly success rate
- Seasonal success rate
- Season wise yearly success rate
- Zone wise success rate

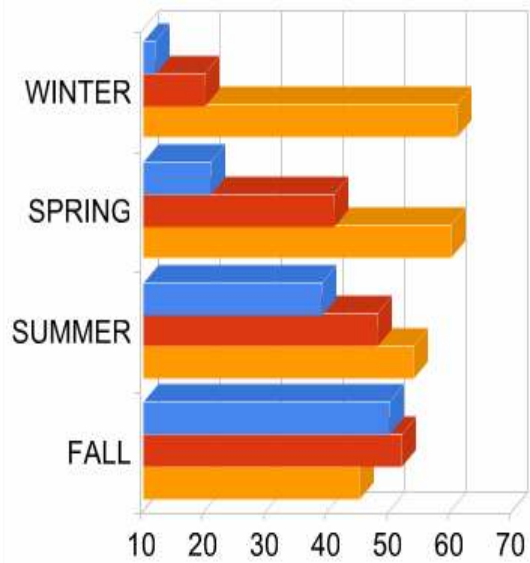
YEARLY SUCCESS RATE



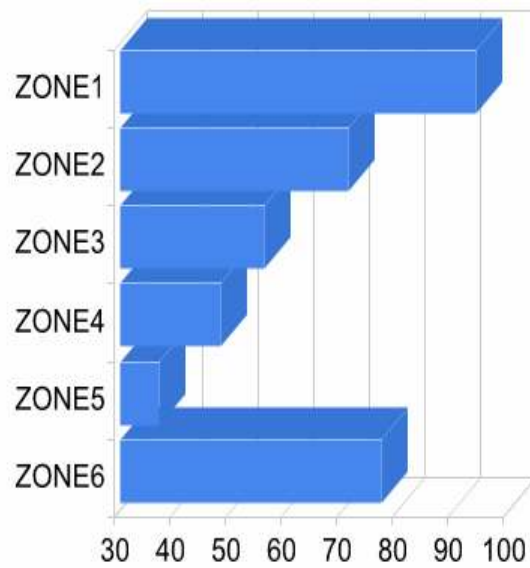
SEASONAL SUCCESS RATE



SEASONAL AND YEARLY RATE



ZONE WISE SUCCESS RATE



YEARLY SUCCESS RATE ▾

Go

YEARLY SUCCESS RATE

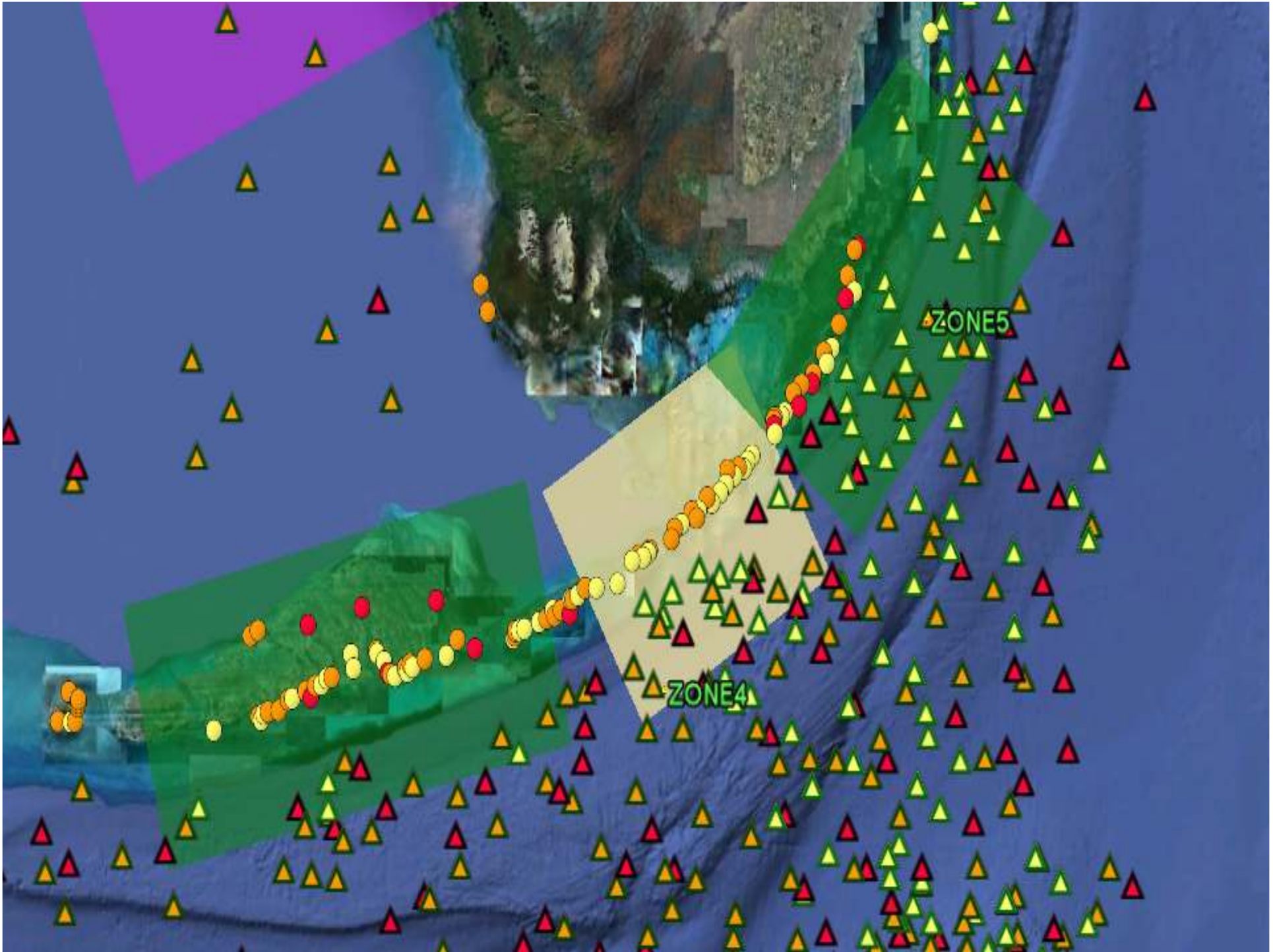
SUCCESS RATE

■ 2005  
■ 2006  
■ 2007

SUCCESS RATE

# Is landing data enough?

- Places near the shore counted
- How much is enough distance?
- Does it give better idea?



# Future Work?

- Finding migrant patterns and the relative factors for real life data

Question?