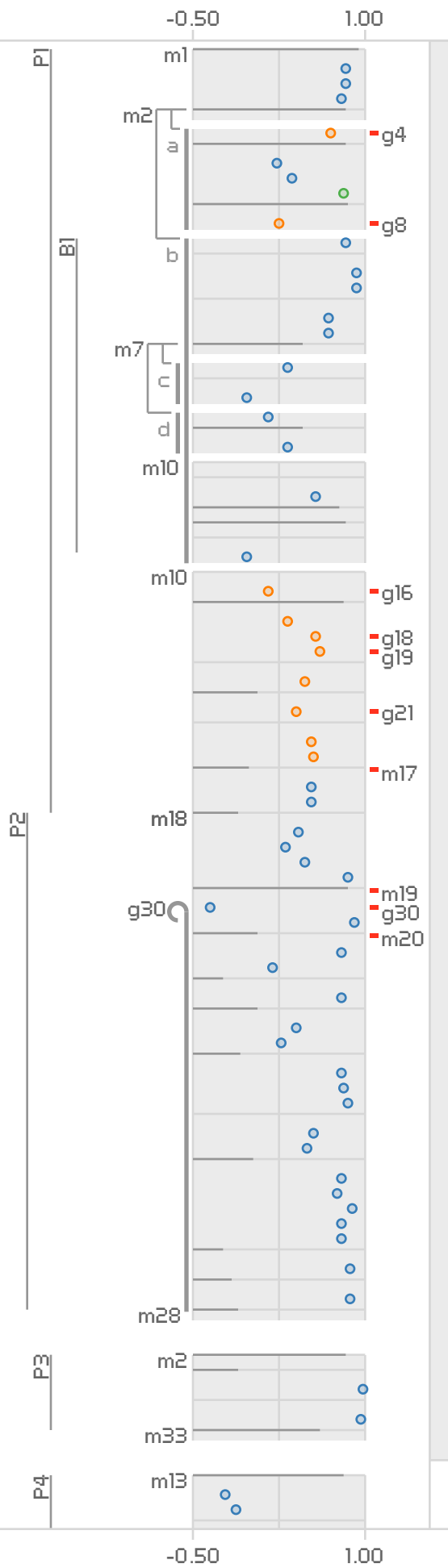


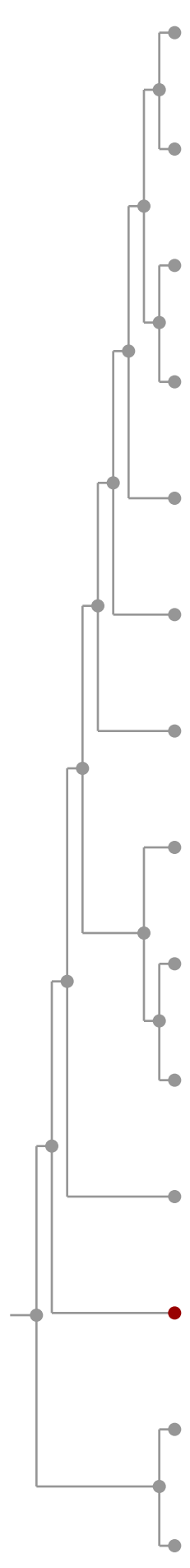
PATHLINE

A TOOL FOR COMPARATIVE FUNCTIONAL GENOMICS

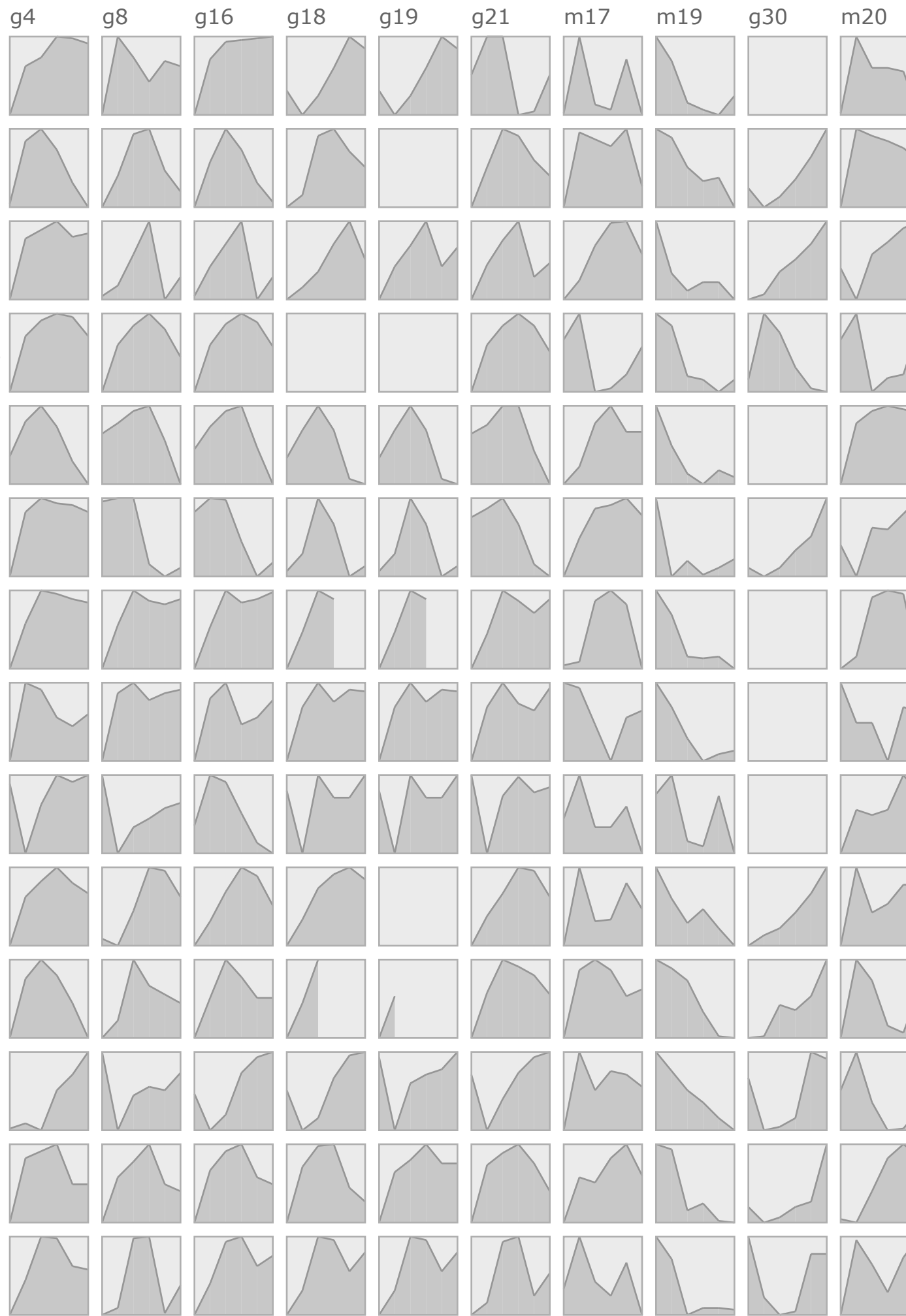
PATHWAY METRIC OVERVIEW



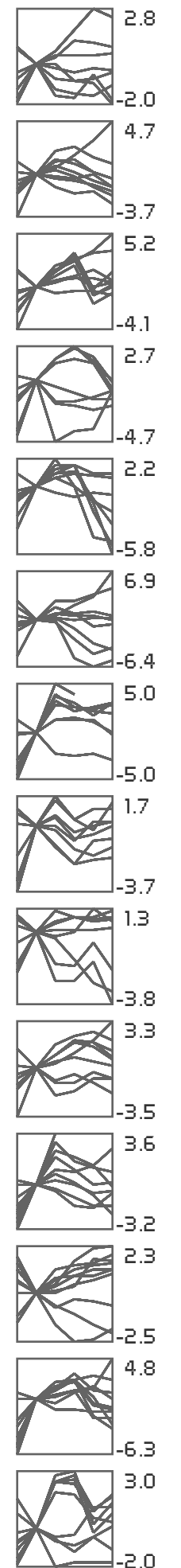
SPECIES



CURVEMAP



OVERLAYS



KEY Genes
 ■ forward ■ reverse ■ bidirectional

Metabolites
 —

Metrics
 ○ PearsonSubgroup1
 + PearsonSubgroup2
 ▬ PearsonALL

